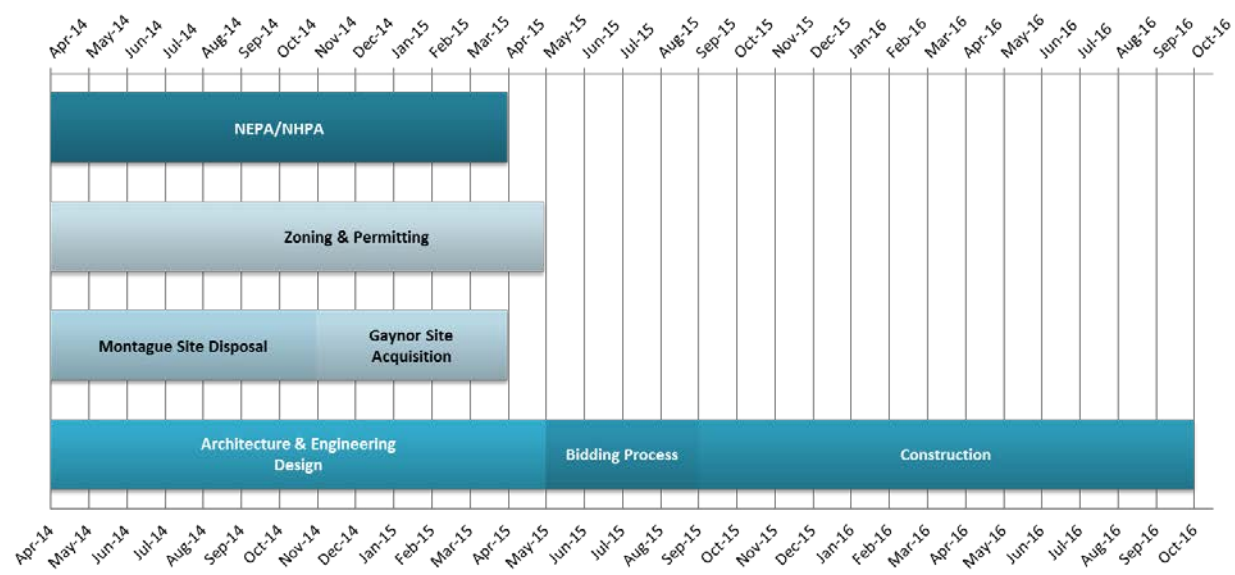


# PROJECT SCHEDULE & NEXT STEPS

## Next Steps: Summer/Fall 2014

- ❑ Federal Transit Administration (FTA) to initiate process for National Environmental Protection Act (NEPA)/National Historic Preservation Act (NHPA);
- ❑ CARTA to begin the process of disposing of the W. Montague Avenue site;
- ❑ CARTA to continue development of site and building plan based on public comments;
- ❑ 2<sup>nd</sup> Public Meeting – September 2014

## Project Schedule



**June 2014**

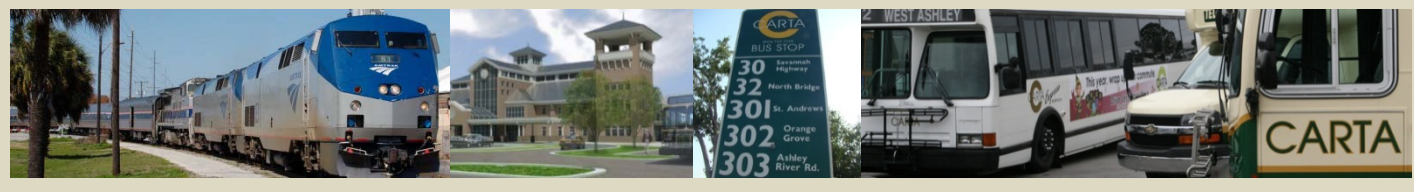
- Public Information Meeting

**September 2014**

- Public Hearing

**December 2014**

- Public Information Meeting



Stay informed at [www.ridecarta.com/intermodal-facility](http://www.ridecarta.com/intermodal-facility)

Submit your comments in writing via email to: [cruze@ridecarta.com](mailto:cruze@ridecarta.com)

or via mail to:  
**Charleston Area Regional Transportation Authority**  
 36 John Street  
 Charleston, SC 29403

# CHARLESTON AREA REGIONAL TRANSPORTATION AUTHORITY



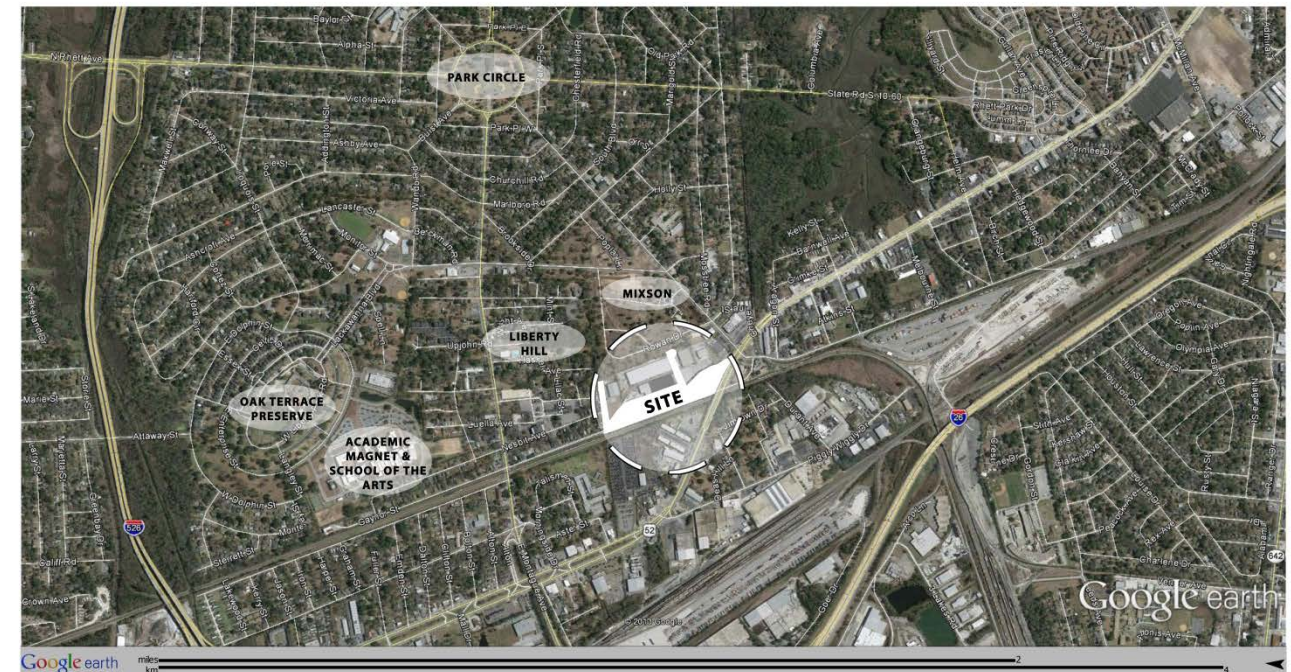
## NORTH CHARLESTON REGIONAL INTERMODAL TRANSPORTATION FACILITY



The North Charleston Regional Intermodal Transportation Facility is proposed for the site where the current Amtrak Station stands on Gaynor Avenue. The Amtrak Station opened in 1956 and is still in operation today. Plans include a 32,000 square-foot transportation hub that will provide intermodal connections between the Charleston Area Regional Transportation Authority (CARTA), Amtrak, and Southeastern Stages.

The purpose of this project is to develop a fully accessible, modern, intermodal

transportation center that can improve the overall operational efficiency of CARTA's bus transportation system serving the Charleston metro area, while providing connectivity to other transit alternatives including Amtrak train service, taxi service, future commuter service options, etc.



# PROJECT HISTORY

## 1996 Feasibility Study Project Goals:

- Improve the image of transit in the region
- Integrate transportation modes and improve overall operations
- Promote accessibility of the Intermodal Facility and the modes it serves
- Promote economic development for North Charleston and the region
- Be cost-effective
- Maintain consistency and compatibility with regional and local plans

*The 2009 Visioning Session resulted in a terminal building with iconic architectural features modeled after Charleston Union Station, which was constructed in 1907 and destroyed by fire in 1947.*



**1996:** City of North Charleston initiates feasibility study that recommends site located on W. Montague Avenue

**1997:** City of North Charleston initiates Environmental Assessment

**1998:** Federal Transit Administration (FTA) issues Finding of No Significant Impact

**2000:** CARTA becomes official public transportation provider and project is transferred from City to CARTA

**2001:** Project acreage is expanded and Environmental Assessment is conducted

**2002:** FTA issues Finding of No Significant Impact

**2008:** CARTA begins architecture and engineering design of the site

**2009:** Visioning session defines Union Station design and building programming; CARTA completes Phase I of the infrastructure improvements on the site.

**2010:** Project receives State of Good Repair Grant

Design & engineering proceed with negotiations with CSX for sidetrack at W. Montague Site

**2011:** City of North Charleston receives grant from National Trust for Historic Places to determine historic significance for the Amtrak Station on Gaynor Avenue

**2012:** CSX rejects platform permit without sidetrack; costs for sidetrack make site unfeasible for Amtrak

**2014:** CARTA begins the process of relocating the project to the current Amtrak Station site on Gaynor Avenue



# PROJECT OVERVIEW



As a gateway to the Lowcountry, this proposed world-class facility would be a catalyst for future economic opportunity in the community and feature leasable retail, restaurant and office spaces. The project would also celebrate the cultural heritage of the Liberty Hill neighborhood in public spaces both inside and outside the station.

The 32,000 square-foot transportation hub proposed for the site of the current Amtrak station on Gaynor Avenue would provide connections between local CARTA bus service, Amtrak, and Southeastern Stages intercity buses.

**Project Funding:** \$14.5 M

**Funding Partners:**  
Federal Transit Administration  
Charleston County

